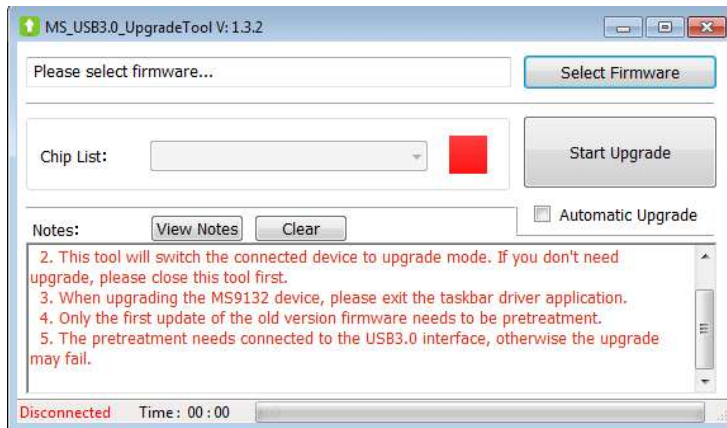
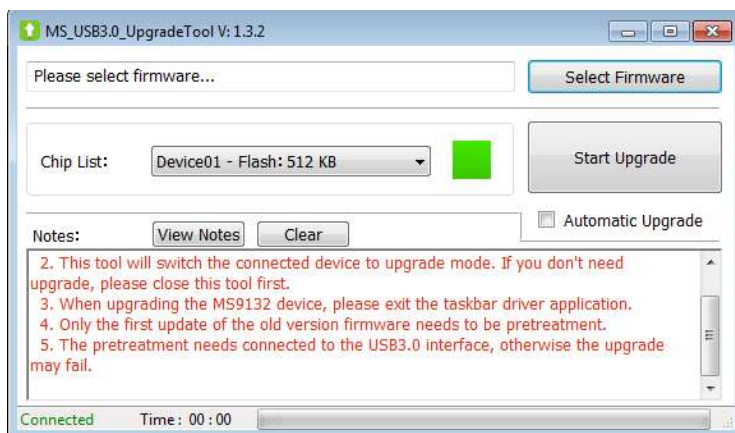



# 2130 Capture Card Upgrade Tutorial

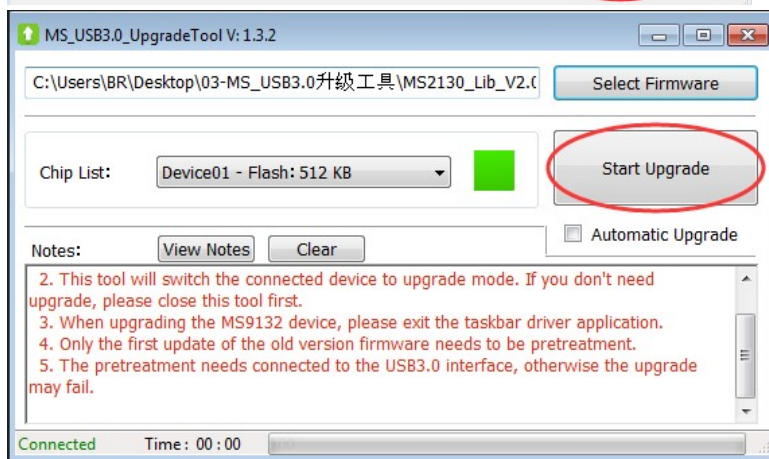
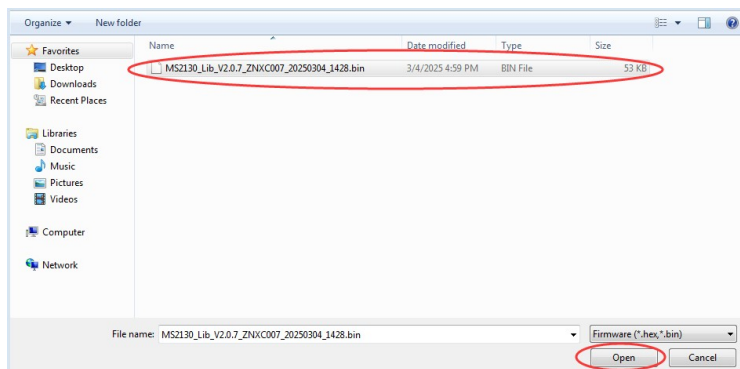
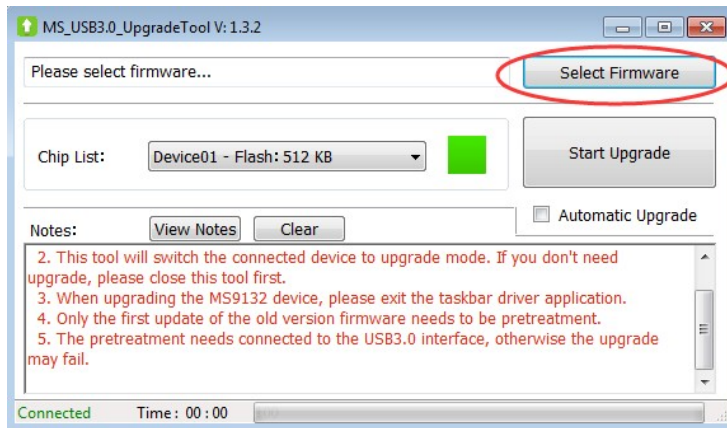
1. Do not connect any capture devices. Open the upgrade tool. At this point, the upgrade list in the tool will be empty, and the square next to it will be red (the tool's bottom-left corner will display "Device Not Connected").



2. Connect the capture card that needs to be upgraded to the computer's USB 3.0 port. Wait for the device list to appear and the square next to it to turn green (the tool's bottom-left corner will display "Device Connected").



3. After the tool shows that the device is connected, click "Select Firmware," choose the firmware file  MS2130\_Lib\_V2.0.7\_ZNXC007\_20250304\_1428.bin , and then click "Start Upgrade."



4. Wait for the tool window to display "Upgrade Successful." Then, close the upgrade tool, disconnect the capture card, and reconnect it to the computer for normal use.

